



advanced gas turbine control system

Advanced gas turbine control systems were designed specifically for the retrofit of heavy duty gas turbine controls; in particular, Speedtronic and LA families of turbine controllers.

The control system is developed on the robust Allen Bradley PLC5 ControlNet family of programmable controllers. Processors perform the sequential logic and closed loop control functions, which are necessary for gas turbine control.

Turbine control philosophy of the original system is maintained, and is easily adapted to site specific requirements.



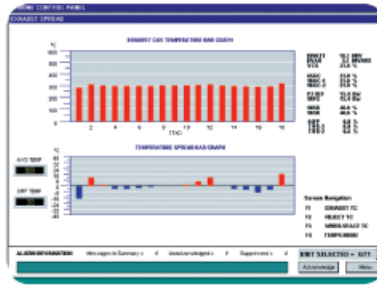
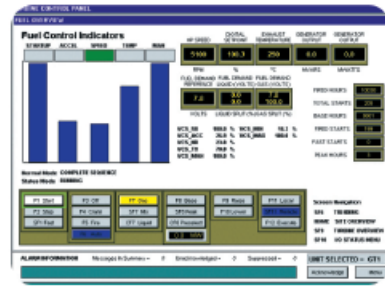
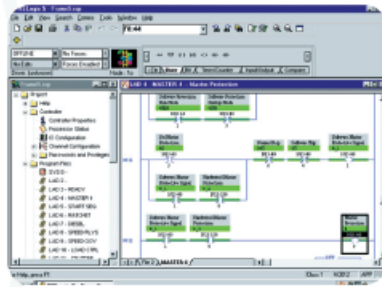
System Features

- PLC5 System Architecture
- Hot Backup PLC Redundancy
- Fuel Governor
- Auto Synchronisation & Power Monitor
- Gas Turbine Protection
- Automatic start-up, auxiliaries sequencing
- Combustion monitor

User Benefits

- Minimise GT downtime/increase availability
- Readily available spares - worldwide support
- SCADA interface, all parameters visible to operator
- Ease of maintenance/set up
- Networking capability
- Easy access and export of GT data

Control System Human Machine Interface



TURBINE SERVICES is a global provider to owners and operators of industrial gas turbines, offering an employee skill-base in excess of 2,000 man-years of experience in gas turbine maintenance solutions. With our heritage in John Brown Engineering, our primary specialization is in the heavy duty frame range of GE designed gas turbines.

Our business is founded on the strength of our technical and engineering capability, reinforced by our commitment to quality and customer satisfaction that is demonstrated by our accreditations (ISO 9001:2000) and registrations (Achilles, Supply Line, FPAL and Repro).

In addition to our extensive experience, our customers also benefit from the high-tech capabilities of our parent company, Chromalloy. Leading the industry in advanced technology derived from 60 years of aero and industrial gas turbine component experience, we offer state-of-the-art component, repair, coating and manufacturing technologies.

Turbine Services is a division of Chromalloy Gas Turbine Corporation with interests in the global Aero & Industrial Gas Turbine market sector.

Services include:

- Plant operation & maintenance
- Field & engineering support
- Component refurbishment
- Replacement spare parts
- Turbine control systems
- Plant operator training
- Rotor Overhaul
- Condition Monitoring
- Long Term Service Agreements
- Turbine Refurbishment



Gas Turbine | Maintenance | Repairs | Spares | Parts

Turbine Services

Ground Floor, Venture Building, Kelvin Campus
West of Scotland Science Park, Glasgow G20 0SP, Scotland, UK
Office: +44 141 945 7000, Fax: +44 141 945 7001
info@turbineserviceslimited.com | www.turbineserviceslimited.com
www.chromalloy.com